



QUARTERLY REVIEW
Target Funds

As of June 30, 2019

PORTFOLIO HIGHLIGHTS

The Target Funds slightly underperformed their combined index portfolios for the three-month period ended June 30, 2019.

Relative performance drivers:

- An underweight allocation to equities, which outpaced fixed income securities, detracted from relative performance.
- Out-of-benchmark exposure to diversifying sectors negatively impacted relative performance. Most notably, exposure to the dynamic global bond strategy and real assets equities weighed on returns. However, the inclusion of long-term U.S. Treasuries benefited performance.
- Favorable security selection within certain underlying portfolios benefited relative performance, most notably within the U.S. small-cap, large-cap value, and mid-cap growth stock portfolios. Security selection in other portfolios detracted from returns, particularly among international developed growth and core stocks and U.S. large-cap growth stocks.

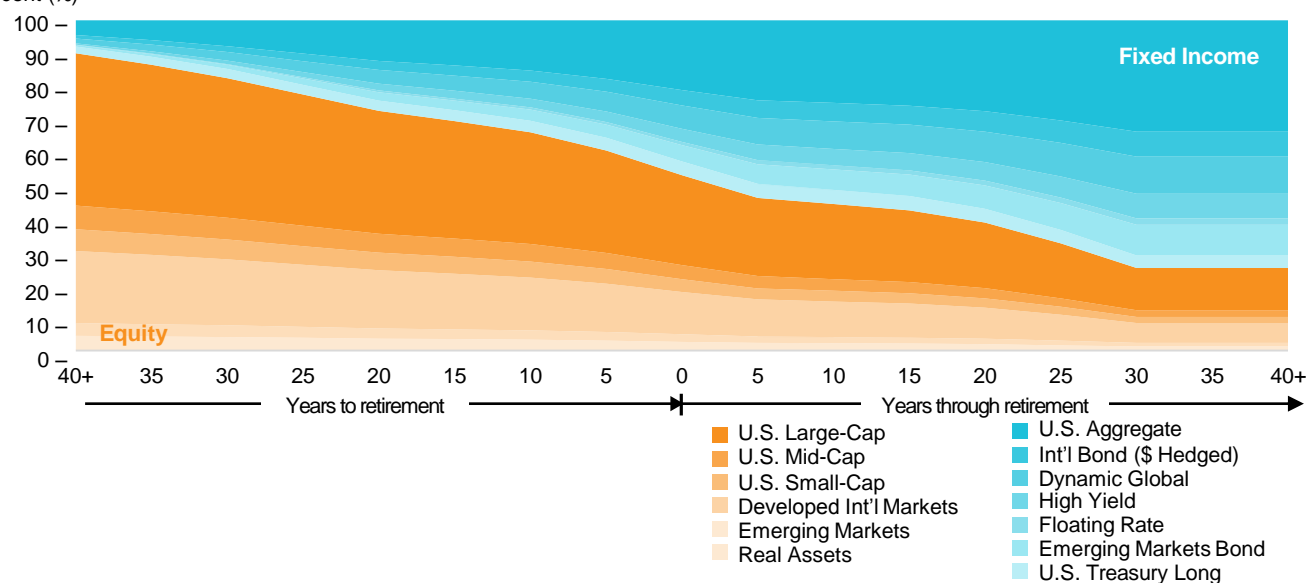
Additional Highlights:

- We are underweight stocks relative to bonds, as equity valuations remain extended against a backdrop of rising risks. At this late stage of the current economic cycle, global stock markets remain vulnerable to enduring trade risks, diminishing earnings expectations, and fading growth. We expect equity and bond market volatility to remain elevated as concerns over monetary policy decisions and political risks unfold.
- The equity portion of the Target Funds produced positive returns but narrowly underperformed the blended equity benchmark consisting of the Russell 3000 Index and the MSCI All Country World Index ex USA. The fixed income portion of the funds generated positive total returns and outperformed the Bloomberg Barclays U.S. Aggregate Bond Index.
- The shift in Federal Reserve policy and a broader easing of financial and liquidity conditions have reduced the near-term likelihood of a recession but leaves global central banks ill-equipped to respond to a more pronounced downturn. While a step back from tightening policies may help to stabilize global growth, it will not, in our view, be sufficient to ignite a reacceleration in growth.

SERIES INFORMATION

Inception Date of Series	August 20, 2013
Expense Information (Series Range)	0.60%–2.99%
Fiscal Year End	May 31
Series Total Assets (all share classes) ¹	\$2,014,070,154

Percent (%) **TARGET FUND GLIDE PATH**



¹ As of March 31, 2019.

PERFORMANCE

(Net of Fee Returns)

	Gross Expense Ratio	Net Expense Ratio	Inception Date	Three Months	Year-to-Date	One Year	Annualized		
							Three Years	Five Years	Since Inception
Target 2060 Fund	2.99%	0.73%	6/23/14	3.71%	16.35%	6.04%	11.75%	7.24%	7.23%
Combined Index Portfolio				3.81	16.20	7.11	11.82	7.51	7.50
Target 2055 Fund	1.44	0.72	8/20/13	3.66	16.04	6.06	11.67	7.19	9.30
Combined Index Portfolio				3.80	15.93	7.20	11.71	7.44	9.17
Target 2050 Fund	1.12	0.72	8/20/13	3.71	15.72	6.23	11.36	7.04	9.14
Combined Index Portfolio				3.79	15.55	7.28	11.36	7.29	8.99
Target 2045 Fund	1.03	0.71	8/20/13	3.68	15.14	6.36	10.90	6.84	8.87
Combined Index Portfolio				3.77	15.00	7.38	10.88	7.07	8.71
Target 2040 Fund	0.92	0.70	8/20/13	3.60	14.53	6.37	10.38	6.60	8.55
Combined Index Portfolio				3.74	14.40	7.43	10.34	6.83	8.39
Target 2035 Fund	0.86	0.68	8/20/13	3.51	13.75	6.44	9.69	6.26	8.13
Combined Index Portfolio				3.64	13.54	7.29	9.63	6.48	7.98
Target 2030 Fund	0.75	0.65	8/20/13	3.40	12.80	6.40	8.93	5.83	7.57
Combined Index Portfolio				3.52	12.60	7.13	8.88	6.04	7.42
Target 2025 Fund	0.69	0.61	8/20/13	3.31	11.72	6.37	8.04	5.33	6.91
Combined Index Portfolio				3.39	11.62	6.96	8.05	5.55	6.82
Target 2020 Fund	0.63	0.59	8/20/13	3.22	10.92	6.44	7.26	4.89	6.33
Combined Index Portfolio				3.30	10.71	6.90	7.24	5.09	6.22
Target 2015 Fund	0.60	0.53	8/20/13	3.21	10.19	6.69	6.51	4.50	5.80
Combined Index Portfolio				3.23	9.96	7.00	6.48	4.69	5.69
Target 2010 Fund	0.81	0.52	8/20/13	3.10	9.81	6.64	6.07	4.29	5.48
Combined Index Portfolio				3.22	9.68	6.99	6.07	4.50	5.37
Target 2005 Fund	1.19	0.54	8/20/13	3.10	9.71	6.65	5.88	4.19	5.31
Combined Index Portfolio				3.20	9.52	7.00	5.90	4.42	5.24

Performance data quoted represents past performance and is not a reliable indicator of future performance. Investment return and principal value will fluctuate so that an investor's shares, when redeemed, may be worth more or less than their original cost. Current performance may be lower or higher than the performance data quoted. To obtain the most recent month-end performance, visit troweprice.com. Consider the investment objectives, risks, and charges and expenses carefully before investing. For a prospectus or, if available, a summary prospectus containing this and other information, call 1-800-638-7780 or visit troweprice.com. Read it carefully. The fund's total return figures reflect the reinvestment of dividends and capital gains, if any.

The principal value of the Target Funds is not guaranteed at any time, including at or after the target date, which is the approximate year an investor plans to retire (assumed to be age 65) and likely stop making new investments in the fund. If an investor plans to retire significantly earlier or later than age 65, the funds may not be an appropriate investment even if the investor is retiring on or near the target date. The funds' allocations among a broad range of underlying T. Rowe Price stock and bond funds will change over time. The funds emphasize asset accumulation prior to retirement, balance the need for reduced market risk and income as retirement approaches, and focus on supporting an income stream over a moderate postretirement withdrawal horizon. The funds are not designed for a lump-sum redemption at the target date and do not guarantee a particular level of income. The funds maintain a substantial allocation to equities both prior to and after the target date, which can result in greater volatility.

The Combined Index Portfolio for each fund includes the Russell 3000 Index, Bloomberg Barclays U.S. Aggregate Bond Index, MSCI All Country World Index ex USA, and Bloomberg Barclays U.S. Treasury Inflation-Protected Securities (TIPS) 1-5 Years Index. Each index is weighted at the appropriate strategic neutral allocation of its respective asset class, which is predetermined and changes over time.

The gross expense ratio reflects the fund expenses as stated in the fee table of the fund's prospectus prior to the deduction of any waiver or reimbursement. The net expense ratio reflects fund expenses as stated in the fee table of the fund's prospectus after the deduction of any waiver or reimbursement. The Funds operate under contractual expense limitations that expire on September 30, 2020.

The fund(s) may have other share classes available that offer different investment minimums and fees. See the prospectus for details.

PERFORMANCE REVIEW

Dovish Central Banks Spur Markets Higher

Global equities weathered a volatile second quarter to deliver positive returns, led by advances in developed markets. In the U.S., stocks rose despite a sharp pullback in May that stemmed from increased trade tensions between the U.S. and key trading partners. Equities rallied from this downturn on mounting expectations that the Federal Reserve will reduce short-term rates in response to slowing economic growth. Stocks were also supported by hopes that the U.S. and China would make progress toward a trade deal at the G-20 summit at the end of June. Though no deal was reached, tensions eased as both parties agreed to resume negotiations and delay the implementation of new tariffs. Outside the U.S., developed markets stocks also delivered positive returns but lagged U.S. shares. In the eurozone, markets performed well, though UK shares were notable laggards. Prime Minister Theresa May resigned in June due to her inability to persuade Parliament to accept the Brexit deal she reached with the European Union. Stocks in developed Asian markets trailed European shares. Australia and Singapore led the region, while equities in Hong Kong and Japan delivered only modest gains. Emerging markets equities trailed developed markets, despite a generally weaker greenback against many emerging market currencies. Russian shares surged on the back of a late-quarter bounce in oil prices that stemmed from heightened tensions in the Persian Gulf region and a mid-June central bank interest rate cut. Chinese shares slipped amid continued trade tensions with the U.S. In Latin America, Brazilian shares continued to build on recent strength, as the enactment of pension reform legislation appears more probable.

U.S. bonds delivered strong returns in the second quarter. The Fed left short-term rates unchanged, as expected. However, at their June meeting, policymakers indicated a willingness to cut rates as needed to sustain economic growth. This dovish rhetoric sent yields on the 10-year Treasury sharply lower, falling to levels not seen since 2016. Long-term Treasuries and corporate bonds led within the investment-grade universe, as long-term interest rates declined throughout the quarter. In a reversal from first-quarter returns, high yield bonds lagged investment-grade issues. Nondollar bonds also benefited from dovish central bank sentiment, as European Central Bank (ECB) President Mario Draghi noted that he was amenable to implementing more stimulus measures should weakening eurozone growth weigh on already-low regional inflation. Emerging markets debt outpaced issues in developed markets, led by returns in local currency-denominated debt, as several key currencies appreciated versus the dollar.

Three-Month Performance Review—Net of Fees

The Target Funds slightly underperformed their combined index portfolios for the three-month period ended June 30, 2019.

Allocation Effect

- Portfolio positioning negatively impacted relative performance for the quarter. Our underweight to equities detracted from relative returns, as equities outpaced fixed income securities, particularly during the rally in global equities over the second half of the period.

Structural Effect

- Our out-of-benchmark exposure to the dynamic global bond strategy weighed on performance, as the sector trailed the Bloomberg Barclays U.S. Aggregate Bond Index.
- The inclusion of real assets equities also hurt relative results, as the real assets sector trailed the blended equity benchmark. This negative impact was partly offset by an underweight tactical allocation to the real assets sector.
- On the positive side, the inclusion of long-term U.S. Treasuries as a diversifying sector bolstered relative performance. The sector outperformed the Bloomberg Barclays U.S. Aggregate Bond Index as Treasury yields declined sharply amid expectations for a Fed rate cut.

Security Selection Effect

- Overall, security selection positively contributed to relative performance. Strong security selection among U.S. small-cap stocks was a notable contributor to relative returns, as these portfolios all outpaced their respective benchmarks.
- Security selection within the U.S. large-cap value and mid-cap growth

equity allocations buoyed relative performance across most of the funds. Selection within the emerging markets stock portfolio, which outpaced its style-specific benchmark, also added value.

- Conversely, unfavorable security selection within the international developed growth and core equity strategies hurt relative performance, as these allocations trailed their respective benchmarks. In the U.S., selection among large-cap growth and mid-cap value stocks also hindered relative results.

Twelve-Month Performance Review—Net of Fees

The Target Funds underperformed their combined index portfolios for the 12-month period ended June 30, 2019.

Structural Effect

- Out-of-benchmark exposure to dynamic global bonds detracted from relative returns, as the sector trailed the Bloomberg Barclays U.S. Aggregate Bond Index over the 12-month period.
- The inclusion of real assets equities also weighed on performance, as the real assets sector underperformed the blended equity benchmark. This negative impact was partly offset by a favorable underweight tactical allocation to the real assets sector.
- The inclusion of long-term U.S. Treasuries and emerging markets bonds as diversifying fixed income sectors was a notable contributor to relative results, as these sectors outpaced the Bloomberg Barclays U.S. Aggregate Bond Index.

Allocation Effect

- Portfolio positioning negatively impacted relative performance for the year. An overweight to U.S. small-cap stocks, which lagged U.S. large-cap stocks, weighed on relative results. An overweight allocation to international stocks also detracted from relative returns, as international stocks trailed U.S. equities.
- On the positive side, our positioning between equities and fixed income benefited performance for the 12-month period. In particular, our underweight to equities pared losses for the funds during the equity market downturn in late 2018.

Security Selection Effect

- Security selection within the international developed equity portfolios was a notable detractor, as these strategies underperformed their respective benchmarks. Unfavorable security selection within the U.S. large-cap growth negatively impacted performance across most of the funds. Security selection within the mid-cap value equity portfolio, which underperformed its style-specific benchmark, also hurt relative results for the year.
- On the positive side, strong security selection among U.S. small-cap stocks partly offset the impact of negative selection in other sectors, as the small-cap equity strategies significantly outperformed their respective benchmarks. Security selection among emerging markets stocks also added value for the year.

PORTFOLIO POSITIONING AND ACTIVITY

Favor Bonds over Stocks

We are underweight stocks relative to bonds, as equity valuations remain extended against a backdrop of rising risks. At this late stage of the current economic cycle, global stock markets remain vulnerable to enduring trade risks, diminishing earnings expectations, and fading growth. Major central banks have turned dovish, which has given legs to intermittent market rallies. The Federal Reserve has pivoted away from tightening and appears poised to cut rates in 2019. While accommodative policy may buoy equity markets in the near term, several durable headwinds remain. Despite optimism for a swift resolution to the U.S.-China trade dispute, a trade deal has remained elusive. Rather than receding, recent geopolitical unease has raised concerns that risks could multiply. We expect equity and bond market volatility to remain elevated as concerns over monetary policy decisions and political risks unfold.

While concerns over the global growth slowdown have led to less compelling yields in the bond market, we believe valuations more fully reflect concerns over persistent geopolitical tensions, weakening economic data, and our position late in the economic cycle. We continue to expect only modest returns from bonds, as the current low-yield environment offers a weak foundation for significant upside. However, global central banks have become less focused on unwinding accommodative policy and now seem more likely to consider stimulus measures to boost liquidity and spur growth. While bonds remain expensive relative to history, with low yields and extended duration, they may provide downside protection against an increase in equity market volatility.

Equities

Favor International Over U.S.

While valuations outside the U.S. remain attractive relative to history, we have continued to trim our overweight to equity markets outside the U.S. Our overweight to international stocks has been driven by relatively more attractive valuations, though this appeal has been diminished by their greater exposure to risks from trade tensions and slowing global growth. U.S. stocks remain vulnerable to trade risks, particularly if the resolution of current disputes is substantially delayed. However, we believe the U.S. market is less susceptible to the impacts of slowing global growth.

Favor Emerging Markets Over Developed Markets

We are overweight to emerging markets stocks relative to developed market stocks. Emerging markets offer attractive valuations supported by rising consumption and may benefit from lower interest rates in developed markets and softer U.S. dollar expectations. Chinese stimulus could be a boon for emerging markets broadly, but the extent of this impact is uncertain. Conversely, the persistent trade tensions between the U.S. and China could pose a more sustained headwind.

While idiosyncratic and political risks remain, the resilience of emerging markets broadly supports our conviction that these concerns do not pose a systemic risk. Many developing countries are less reliant on U.S. dollar funding than in the past, which reduces the risk of a widespread financial crisis. We expect China's growth trajectory will stabilize, supported by fiscal stimulus and domestic demand. De-escalation of the U.S.-China trade conflict could stabilize markets, although equities have likely priced in this outcome and the overall impact could be muted.

Favor U.S. Growth Over U.S. Value

We are overweight to U.S. growth stocks relative to U.S. value stocks. Valuations among growth stocks remain extended relative to value stocks but offer better prospects for growth in the current market environment. While strong returns among growth stocks were particularly concentrated among tech and consumer-related companies in 2018, many of these names have traded lower in 2019 on concerns for slowing global growth and heightened trade tension. Notwithstanding the risk the U.S.-China trade dispute poses for supply chains among some technology companies, we expect secular growth companies to benefit in a sustained low-growth environment. Value stocks have higher exposure to cyclical sectors and, while tax reform provided a near-term profit boost in 2018, it remains uncertain if there will be a catalyst to provide a durable expansion in economic growth.

Favor International Growth Over International Value

We are overweight to growth stocks outside the U.S. relative to value stocks. Growth stock valuations have moderated and are now in line with history. Conversely, while valuations among value stocks remain relatively attractive, broad economic weakness poses a potential near-term challenge, particularly within cyclical sectors such as industrials and business services, which could face headwinds from moderating growth expectations and persistent low interest rates. Persistent trade disputes, a resurgence in political uncertainty, and fundamental weakness among European financials—a key barometer of the value sector—also pose headwinds.

Favor Small-Cap Over Large-Cap

We remain overweight to U.S. small-cap stocks, which continue to offer compelling valuations relative to U.S. large-cap stocks. While small-cap stocks were early beneficiaries from market concerns over trade risks, we recognize that they are not immune to other concerns that have also weighed on large-cap stocks, including a broader risk-off sentiment and disruption to global supply chains.

Favor Global Equity Over Real Assets

We remain underweight real assets equities as we are cautious on the long-term prospects for energy and commodity prices, given continued advances in productivity growth in extractive industries, such as mining and drilling, and further signs of fading Chinese demand for industrial metals. Real estate investment trust (REIT) fundamentals are broadly positive, with muted supply growth and healthy levels of occupancy and rental income. Should interest rates fall and remain lower for longer, we believe this may also be supportive for REITs.

Fixed Income

High Yield Bonds

We continued to add to our position in high yield bonds and are now overweight. The yield carry on high yield bonds is attractive, while the sector is supported by broadly positive corporate fundamentals and low default expectations. Yields on U.S. investment-grade bonds remain low and should remain so in the near term as central bank posture has turned more accommodative. Given the current environment, we believe that high yield bonds can deliver equity-like returns with less expected volatility.

Long-Term U.S. Treasuries

We are neutral to long-term U.S. Treasury bonds. Despite their low yields, Treasury bonds have been negatively correlated with equities and may provide ballast against an equity market downturn. Modest growth expectations and demand from institutional investors will continue to pressure rates lower at the long end of the curve, but this could be offset by increased deficit spending or a pickup in inflation expectations.

Floating Rate Loans

We remain neutral to floating rate bank loans, as the sector has become less attractive in a declining interest rate environment.

Dynamic Global Bonds

We have a neutral allocation to the dynamic global bond strategy. This strategy is designed to have less sensitivity to interest rates than a broad bond market index. Given our expectations for sustained equity and bond market volatility, we believe this strategy may offer valuable diversification benefits.

Emerging Markets Bonds

We are overweight to emerging markets dollar-denominated bonds. Yields remain attractive relative to fundamentals, but heightened political uncertainty and idiosyncratic risks in key markets could dampen returns. While demand for safe-haven assets could bolster the U.S. dollar, lower U.S. economic growth and the potential for a Federal Reserve rate cut could lead to a stable or softer U.S. dollar, which could be supportive for emerging markets debt.

Hedged Nondollar Bonds

We are neutral to hedged nondollar bonds. On a currency-hedged basis, nondollar bonds offer comparable yields to U.S. investment-grade debt. Short-term rate differentials between the U.S. and other developed markets have led to more competitive hedged yields on bonds in Europe and Japan for U.S. dollar-based investors, while the interest rate risk associated with extended durations have tempered our view. Despite signs that economic growth may be softening in Europe, concerns over ECB monetary policy and political risks could put upward pressure on European yields.

MANAGER'S OUTLOOK

Risk assets continued their strong start to 2019 as many of the fears that led to the fourth-quarter sell-off receded. Despite volatility over the quarter driven by the resurgence of U.S.-China trade tensions and a moderating outlook for global growth, the Fed's dovish pivot and overall optimism helped spur equity markets higher. With the tailwind from U.S. fiscal stimulus fading, the anticipated boost to long-term growth through capital expenditure has failed to materialize, as uncertainty has discouraged spending. In Europe, monetary policy remains supportive with an accommodative ECB; however, unresolved Brexit negotiations and the region's vulnerability to trade risks and China's economy pose potential headwinds. China's stimulus measures—though domestically focused—combined with a more stable U.S. dollar should be supportive of emerging economies.

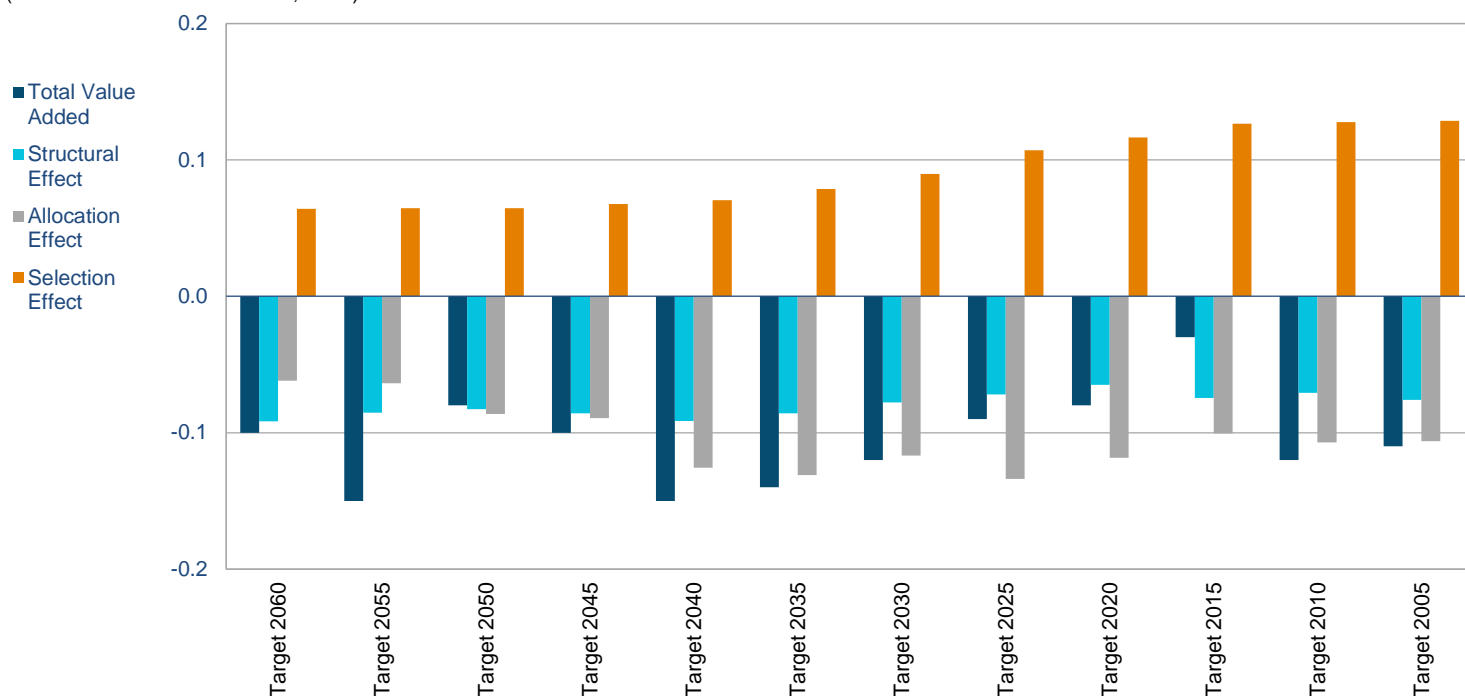
The shift in Fed policy and a broader easing of financial and liquidity conditions have reduced the near-term likelihood of a recession but leaves global central banks ill-equipped to respond to a more pronounced downturn. While a step back from tightening policies may help to stabilize global growth, it will not, in our view, be sufficient to ignite a reacceleration in growth. Near-term risks to global markets include repercussions from potential monetary policy missteps and an escalation in trade tensions.

The return of sustained volatility—combined with above-average valuations in many asset classes against a backdrop filled with geopolitical and monetary policy risks—underscores the value of our strategic investment approach, in our view. Given the confluence of positive and negative forces on the horizon that can drive global financial markets, we believe that our multi-asset portfolios' broad diversification and T. Rowe Price's strengths in fundamental research will help us deliver solid returns in a variety of market environments over the long term.

QUARTERLY ATTRIBUTION—NET OF FEES

SOURCES OF VALUE ADDED—TOTAL FUND

(Three months ended June 30, 2019)



STRUCTURAL EFFECT—MAJOR CONTRIBUTORS AND DETRACTORS

(Three months ended June 30, 2019)

	Target 2060	Target 2055	Target 2050	Target 2045	Target 2040	Target 2035	Target 2030	Target 2025	Target 2020	Target 2015	Target 2010	Target 2005
Structural Effect Totals	-9 bps	-9 bps	-8 bps	-9 bps	-9 bps	-9 bps	-8 bps	-7 bps	-7 bps	-7 bps	-7 bps	-8 bps
US Treasury Long	6 bps	7 bps	9 bps	9 bps	10 bps	10 bps	10 bps	10 bps	10 bps	11 bps	11 bps	11 bps
Emerging Markets Bond	0 bps	1 bp	1 bp	1 bp	2 bps	2 bps	2 bps	2 bps	3 bps	3 bps	4 bps	4 bps
International Bond Hedged	-1 bp	-1 bp	-1 bp	-1 bp	-1 bp	-1 bp	-2 bps	-2 bps	-2 bps	-2 bps	-2 bps	-2 bps
Dynamic Global Bond	-3 bps	-3 bps	-4 bps	-5 bps	-7 bps	-7 bps	-7 bps	-8 bps	-9 bps	-11 bps	-11 bps	-12 bps
Real Assets	-7 bps	-7 bps	-7 bps	-7 bps	-6 bps	-6 bps	-5 bps	-5 bps	-4 bps	-4 bps	-3 bps	-3 bps

Performance data quoted represents past performance and is not a reliable indicator of future performance. Investment return and principal value will fluctuate so that an investor's shares, when redeemed, may be worth more or less than their original cost. Current performance may be lower or higher than the performance data quoted. To obtain the most recent month-end performance, visit troweprice.com. Consider the investment objectives, risks, and charges and expenses carefully before investing. For a prospectus or, if available, a summary prospectus containing this and other information, call 1-800-638-7780 or visit troweprice.com. Read it carefully. The fund's total return figures reflect the reinvestment of dividends and capital gains, if any.

Analysis represents the total fund performance of each fund relative to its respective benchmark as calculated by T. Rowe Price's proprietary attribution model, and includes all underlying mutual funds.

Value Added: The performance difference between the portfolio and its custom benchmark.

Structural Effect: The impact of any differences between the portfolio's strategic neutral design and its benchmark, including the use of investment sectors that are not represented in the benchmark, and the performance differences between an asset class and the underlying investment sectors chosen to represent it.

Allocation Effect: The aggregate performance impact of differences in the portfolio asset classes and sector weights relative to their blended sector benchmarks. Totals for each effect may not be equivalent to underlying component pieces due to the exclusion of component effects that can be considered immaterial in size.

Selection Effect: The aggregate impact of the performance difference between the underlying sector portfolios and their respective sector indices.

QUARTERLY ATTRIBUTION—NET OF FEES

ALLOCATION EFFECT—MAJOR CONTRIBUTORS AND DETRACTORS

(Three months ended June 30, 2019)

	Target 2060	Target 2055	Target 2050	Target 2045	Target 2040	Target 2035	Target 2030	Target 2025	Target 2020	Target 2015	Target 2010	Target 2005
Allocation Effect Totals	-6 bps	-6 bps	-9 bps	-9 bps	-13 bps	-13 bps	-12 bps	-13 bps	-12 bps	-10 bps	-11 bps	-11 bps
Core Equity vs. Real Assets	4 bps	4 bps	4 bps	4 bps	3 bps	3 bps	3 bps	3 bps	2 bps	2 bps	2 bps	2 bps
Large-vs.Mid-vs.Small-Cap	-2 bps	-2 bps	-2 bps	-2 bps	-2 bps	-1 bp	-1 bp	-1 bp	-1 bp	-1 bp	-1 bp	-1 bp
Non-U.S. Developed vs. Emerging	-3 bps	-3 bps	-3 bps	-3 bps	-2 bps	-2 bps	-2 bps	-2 bps	-2 bps	-1 bp	-1 bp	-1 bp
Equity vs. Fixed Income	-7 bps	-7 bps	-9 bps	-10 bps	-13 bps	-13 bps	-12 bps	-13 bps	-12 bps	-10 bps	-11 bps	-11 bps

SELECTION EFFECT—MAJOR CONTRIBUTORS AND DETRACTORS

(Three months ended June 30, 2019)

	Target 2060	Target 2055	Target 2050	Target 2045	Target 2040	Target 2035	Target 2030	Target 2025	Target 2020	Target 2015	Target 2010	Target 2005
Selection Effect Total	6 bps	6 bps	6 bps	7 bps	7 bps	8 bps	9 bps	11 bps	12 bps	13 bps	13 bps	13 bps
Value Fund - I Class	15 bps	15 bps	14 bps	13 bps	12 bps	10 bps	7 bps	5 bps	3 bps	2 bps	0 bps	0 bps
New Horizons Fund - I Class	14 bps	13 bps	13 bps	12 bps	11 bps	10 bps	9 bps	8 bps	7 bps	6 bps	5 bps	5 bps
Small Cap Stock Fund - I Class	9 bps	9 bps	8 bps	8 bps	7 bps	6 bps	6 bps	5 bps	4 bps	4 bps	3 bps	3 bps
Small-Cap Value Fund - I Class	7 bps	7 bps	7 bps	6 bps	6 bps	5 bps	5 bps	4 bps	4 bps	3 bps	3 bps	3 bps
Mid-Cap Growth Fund - I Class	6 bps	6 bps	6 bps	5 bps	5 bps	5 bps	4 bps	3 bps	3 bps	3 bps	2 bps	2 bps
Emerging Markets Stock Fund - I Class	6 bps	6 bps	5 bps	5 bps	5 bps	4 bps	4 bps	3 bps	3 bps	3 bps	2 bps	2 bps
Mid-Cap Value Fund - I Class	-7 bps	-7 bps	-6 bps	-6 bps	-6 bps	-5 bps	-5 bps	-4 bps	-3 bps	-3 bps	-3 bps	-3 bps
Overseas Stock Fund - I Class	-13 bps	-12 bps	-12 bps	-11 bps	-10 bps	-9 bps	-8 bps	-7 bps	-6 bps	-5 bps	-5 bps	-5 bps
Growth Stock Fund - I Class	-16 bps	-16 bps	-15 bps	-14 bps	-13 bps	-11 bps	-9 bps	-6 bps	-4 bps	-2 bps	0 bps	0 bps
International Stock Fund - I Class	-18 bps	-17 bps	-17 bps	-16 bps	-14 bps	-13 bps	-11 bps	-10 bps	-9 bps	-8 bps	-7 bps	-7 bps

Past performance is not a reliable indicator of future performance.

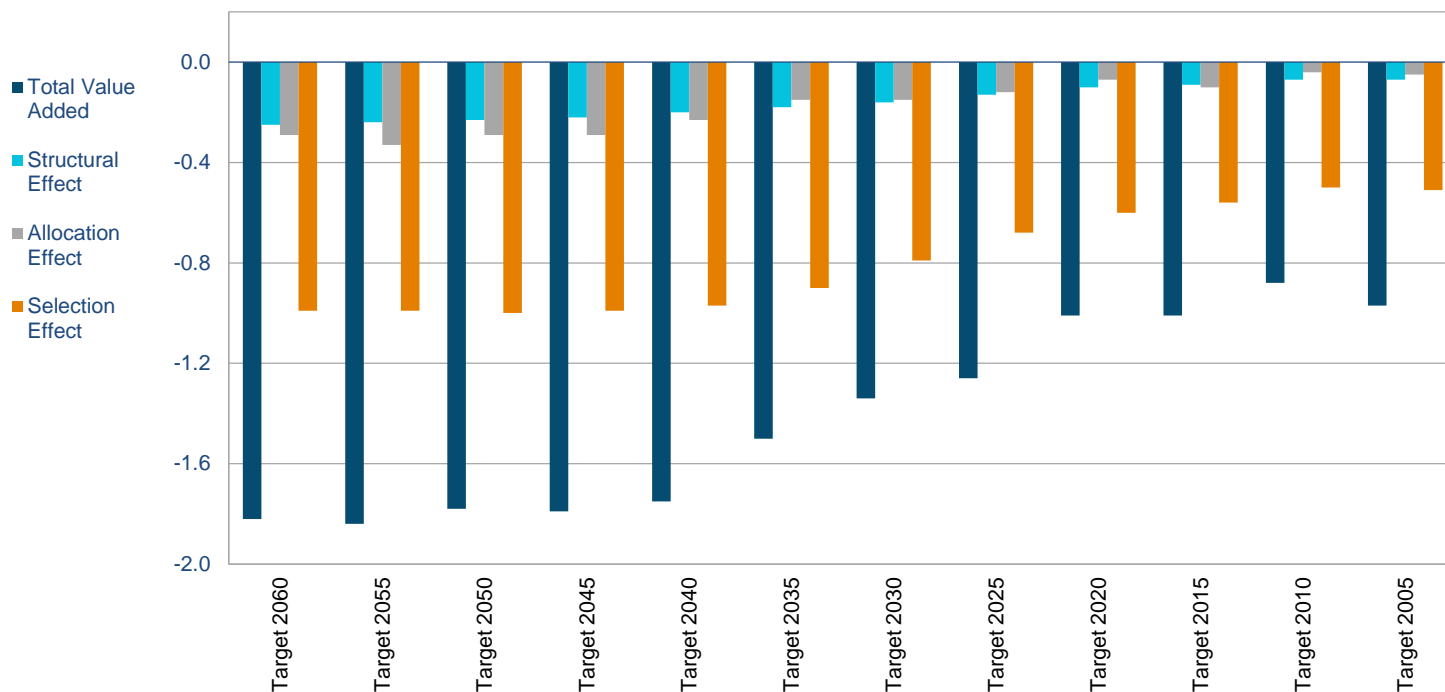
Allocation Effect: The aggregate performance impact of differences in the portfolio asset classes and sector weights relative to their blended sector benchmarks. Totals for each effect may not be equivalent to underlying component pieces due to the exclusion of component effects that can be considered immaterial in size.

Selection Effect: The aggregate impact of the performance difference between the underlying sector portfolios and their respective sector indices.

12 MONTH ATTRIBUTION—NET OF FEES

SOURCES OF VALUE ADDED—TOTAL FUND

(12 months ended June 30, 2019)



STRUCTURAL EFFECT—MAJOR CONTRIBUTORS AND DETRACTORS

(12 months ended June 30, 2019)

	Target 2060	Target 2055	Target 2050	Target 2045	Target 2040	Target 2035	Target 2030	Target 2025	Target 2020	Target 2015	Target 2010	Target 2005
Structural Effect Totals	-57 bps	-55 bps	-53 bps	-50 bps	-47 bps	-42 bps	-37 bps	-31 bps	-25 bps	-22 bps	-19 bps	-19 bps
US Treasury Long	10 bps	12 bps	13 bps	14 bps	15 bps	15 bps	15 bps	15 bps	16 bps	17 bps	17 bps	17 bps
Emerging Markets Bond	2 bps	3 bps	4 bps	6 bps	9 bps	10 bps	11 bps	12 bps	14 bps	16 bps	17 bps	18 bps
Floating Rate	0 bps	-1 bp	-1 bp	-2 bps	-2 bps	-2 bps	-2 bps	-3 bps	-3 bps	-4 bps	-4 bps	-4 bps
Dynamic Global Bond	-6 bps	-7 bps	-9 bps	-12 bps	-15 bps	-16 bps	-16 bps	-17 bps	-20 bps	-23 bps	-24 bps	-25 bps
Real Assets	-15 bps	-14 bps	-14 bps	-13 bps	-13 bps	-12 bps	-10 bps	-9 bps	-8 bps	-7 bps	-6 bps	-6 bps

Analysis represents the total fund performance of each fund relative to its respective benchmark as calculated by T. Rowe Price's proprietary attribution model, and includes all underlying mutual funds. **Past performance is not a reliable indicator of future performance.**

Value Added: The performance difference between the portfolio and its custom benchmark.

Structural Effect: The impact of any differences between the portfolio's strategic neutral design and its benchmark, including the use of investment sectors that are not represented in the benchmark, and the performance differences between an asset class and the underlying investment sectors chosen to represent it.

Allocation Effect: The aggregate performance impact of differences in the portfolio asset classes and sector weights relative to their blended sector benchmarks. Totals for each effect may not be equivalent to underlying component pieces due to the exclusion of component effects that can be considered immaterial in size.

Selection Effect: The aggregate impact of the performance difference between the underlying sector portfolios and their respective sector indices.

12 MONTH ATTRIBUTION—NET OF FEES

ALLOCATION EFFECT—MAJOR CONTRIBUTORS AND DETRACTORS

(12 months ended June 30, 2019)

	Target 2060	Target 2055	Target 2050	Target 2045	Target 2040	Target 2035	Target 2030	Target 2025	Target 2020	Target 2015	Target 2010	Target 2005
Allocation Effect Totals	-9 bps	-13 bps	-13 bps	-15 bps	-16 bps	-10 bps	-11 bps	-11 bps	-6 bps	-9 bps	-4 bps	-5 bps
Equity vs. Fixed Income	10 bps	6 bps	4 bps	2 bps	1 bp	5 bps	4 bps	4 bps	7 bps	2 bps	6 bps	4 bps
Core Equity vs. Real Assets	7 bps	7 bps	7 bps	7 bps	6 bps	6 bps	5 bps	5 bps	4 bps	3 bps	3 bps	3 bps
U.S. Equity Growth vs. Value	5 bps	5 bps	5 bps	5 bps	4 bps	4 bps	3 bps	2 bps	2 bps	1 bp	1 bp	1 bp
Non-U.S. Developed vs. Emerging	-3 bps	-3 bps	-3 bps	-3 bps	-2 bps	-2 bps	-2 bps	-2 bps	-2 bps	-1 bp	-1 bp	-1 bp
U.S. vs. Non-U.S. Equity	-14 bps	-14 bps	-13 bps	-12 bps	-11 bps	-10 bps	-9 bps	-8 bps	-6 bps	-5 bps	-4 bps	-4 bps
Large-vs.-Mid-vs.Small-Cap	-18 bps	-17 bps	-16 bps	-16 bps	-15 bps	-15 bps	-14 bps	-13 bps	-11 bps	-10 bps	-9 bps	-9 bps

SELECTION EFFECT—MAJOR CONTRIBUTORS AND DETRACTORS

(12 months ended June 30, 2019)

	Target 2060	Target 2055	Target 2050	Target 2045	Target 2040	Target 2035	Target 2030	Target 2025	Target 2020	Target 2015	Target 2010	Target 2005
Selection Effect Total	-16 bps	-16 bps	-17 bps	-15 bps	-14 bps	-10 bps	-2 bps	5 bps	11 bps	14 bps	20 bps	19 bps
New Horizons Fund - I Class	47 bps	46 bps	44 bps	42 bps	39 bps	36 bps	32 bps	28 bps	24 bps	20 bps	19 bps	18 bps
Small Cap Stock Fund - I Class	35 bps	34 bps	32 bps	31 bps	29 bps	26 bps	24 bps	21 bps	18 bps	15 bps	14 bps	14 bps
Emerging Markets Stock Fund - I Class	17 bps	16 bps	16 bps	15 bps	14 bps	12 bps	11 bps	10 bps	8 bps	7 bps	7 bps	7 bps
Small-Cap Value Fund - I Class	16 bps	15 bps	15 bps	14 bps	13 bps	12 bps	11 bps	10 bps	8 bps	7 bps	7 bps	6 bps
Value Fund - I Class	8 bps	7 bps	7 bps	6 bps	5 bps	4 bps	3 bps	2 bps	1 bp	1 bp	0 bps	0 bps
International Stock Fund - I Class	-9 bps	-9 bps	-9 bps	-8 bps	-8 bps	-7 bps	-7 bps	-6 bps	-5 bps	-5 bps	-4 bps	-4 bps
International Value Equity Fund - I Class	-15 bps	-15 bps	-14 bps	-13 bps	-12 bps	-11 bps	-10 bps	-9 bps	-7 bps	-6 bps	-6 bps	-6 bps
Mid-Cap Value Fund - I Class	-27 bps	-26 bps	-25 bps	-23 bps	-22 bps	-20 bps	-18 bps	-15 bps	-13 bps	-11 bps	-10 bps	-10 bps
Overseas Stock Fund - I Class	-32 bps	-31 bps	-30 bps	-28 bps	-26 bps	-24 bps	-21 bps	-19 bps	-16 bps	-14 bps	-13 bps	-12 bps
Growth Stock Fund - I Class	-56 bps	-54 bps	-53 bps	-50 bps	-46 bps	-39 bps	-31 bps	-23 bps	-14 bps	-8 bps	0 bps	0 bps

Past performance is not a reliable indicator of future performance.

Allocation Effect: The aggregate performance impact of differences in the portfolio asset classes and sector weights relative to their blended sector benchmarks. Totals for each effect may not be equivalent to underlying component pieces due to the exclusion of component effects that can be considered immaterial in size.

Selection Effect: The aggregate impact of the performance difference between the underlying sector portfolios and their respective sector indices.

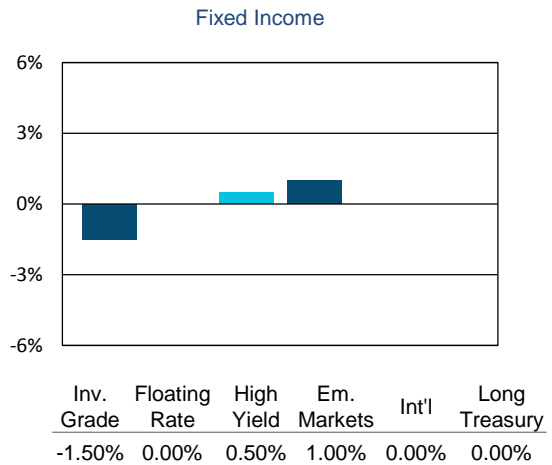
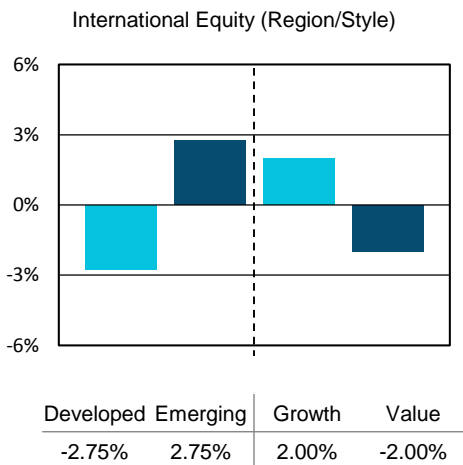
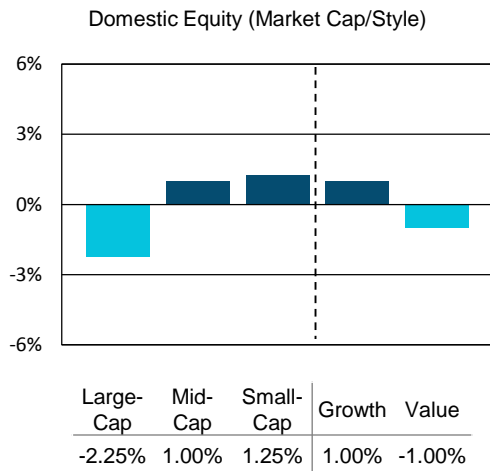
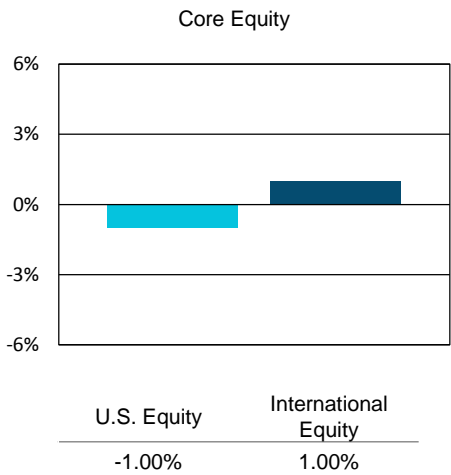
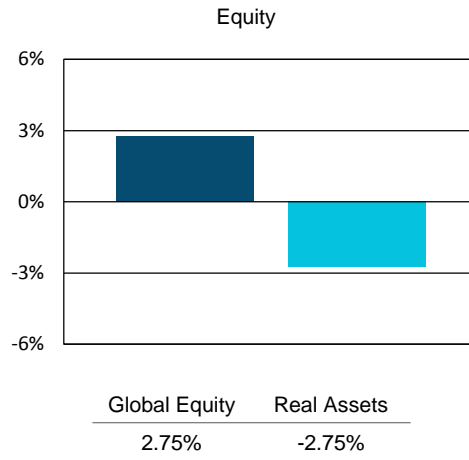
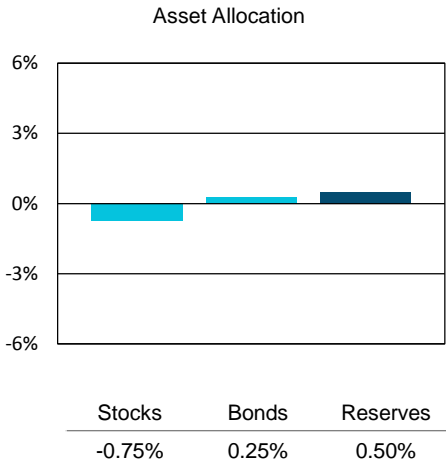
SECTOR ALLOCATION—NEUTRAL WEIGHTS

	Target Funds											
	2060	2055	2050	2045	2040	2035	2030	2025	2020	2015	2010	2005
Total Equity	90.00%	87.50%	83.50%	78.50%	73.50%	66.50%	59.50%	52.00%	44.50%	38.00%	36.00%	34.50%
Total Fixed Income	10.00	12.50	16.50	21.50	26.50	33.50	40.50	48.00	55.50	62.00	64.00	65.50
U.S. EQUITY												
Large-Cap Growth												
Growth Stock Fund—I Class	19.61	19.07	18.20	17.11	15.31	12.73	10.12	7.22	4.24	2.43	0.00	0.00
Large-Cap Core												
Equity Index 500—I Class	6.87	6.67	6.36	5.98	7.02	8.60	10.23	12.19	14.31	14.60	18.43	17.67
Large-Cap Value												
Value Fund	19.61	19.07	18.20	17.11	15.31	12.73	10.12	7.22	4.24	2.43	0.00	0.00
Mid-Cap Growth												
Mid-Cap Growth Fund—I Class	3.59	3.49	3.33	3.13	2.93	2.65	2.37	2.07	1.78	1.52	1.44	1.38
Mid-Cap Value												
Mid-Cap Value Fund—I Class	3.59	3.49	3.33	3.13	2.93	2.65	2.37	2.07	1.78	1.52	1.44	1.38
Small-Cap Growth												
New Horizons Fund—I Class	2.19	2.13	2.04	1.92	1.79	1.62	1.45	1.27	1.08	0.92	0.88	0.84
Small-Cap Core												
Small-Cap Stock Fund—I Class	2.20	2.14	2.03	1.91	1.80	1.63	1.46	1.27	1.09	0.93	0.87	0.84
Small-Cap Value												
Small-Cap Value Fund—I Class	2.19	2.13	2.04	1.92	1.79	1.62	1.45	1.27	1.08	0.92	0.88	0.84
Total U.S. Equity	59.85	58.19	55.53	52.21	48.88	44.23	39.57	34.58	29.60	25.27	23.94	22.95
INTERNATIONAL EQUITY												
Developed Growth												
International Stock Fund—I Class	7.27	7.07	6.74	6.34	5.94	5.37	4.81	4.20	3.59	3.07	2.91	2.79
Developed Core												
Overseas Stock Fund—I Class	7.26	7.06	6.75	6.33	5.93	5.37	4.80	4.20	3.60	3.07	2.90	2.78
Developed Value												
International Value Equity Fund—I Class	7.27	7.07	6.74	6.34	5.94	5.37	4.81	4.20	3.59	3.07	2.91	2.79
Emerging Markets												
Emerging Markets Stock Fund—I Class	3.85	3.74	3.57	3.36	3.14	2.84	2.54	2.22	1.90	1.62	1.54	1.47
Total International Equity	25.65	24.94	23.80	22.37	20.95	18.95	16.96	14.82	12.68	10.83	10.26	9.83
REAL ASSETS EQUITY												
Real Assets Equity												
Real Assets Fund—I Class	4.50	4.37	4.17	3.92	3.67	3.32	2.97	2.60	2.22	1.90	1.80	1.72

SECTOR ALLOCATION—NEUTRAL WEIGHTS

	Target Funds											
	2060	2055	2050	2045	2040	2035	2030	2025	2020	2015	2010	2005
Total Equity	90.00%	87.50%	83.50%	78.50%	73.50%	66.50%	59.50%	52.00%	44.50%	38.00%	36.00%	34.50%
Total Fixed Income	10.00	12.50	16.50	21.50	26.50	33.50	40.50	48.00	55.50	62.00	64.00	65.50
FIXED INCOME												
Core												
New Income Fund—I Class	4.50	5.62	7.42	9.67	11.92	12.82	13.27	14.17	16.20	18.90	19.80	20.47
International Bond Fund (USD Hedged)—I Class	1.50	1.88	2.48	3.23	3.98	4.28	4.43	4.73	5.40	6.30	6.60	6.83
Dynamic Global Bond Fund—I Class	1.00	1.25	1.65	2.15	2.65	2.85	2.95	3.15	3.60	4.20	4.40	4.55
High Yield												
High Yield Fund—I Class	0.40	0.57	0.91	1.43	1.99	2.21	2.32	2.54	3.00	3.68	3.91	4.10
Floating Rate Fund—I Class	0.10	0.14	0.23	0.36	0.50	0.55	0.58	0.64	0.75	0.92	0.98	1.02
Emerging Markets												
Emerging Markets Bond Fund—I Class	0.50	0.71	1.13	1.78	2.49	2.76	2.90	3.18	3.76	4.60	4.89	5.12
Long Treasuries												
U.S. Treasury Long Term Fund—I Class	2.00	2.32	2.69	2.89	2.98	3.03	3.04	3.10	3.29	3.40	3.41	3.41
Inflation Focused												
Limited Duration Inflation Focused Bond Fund—I Class	0.00	0.00	0.00	0.00	0.00	5.00	11.00	16.50	19.50	20.00	20.00	20.00
Total Fixed Income	10.00	12.50	16.50	21.50	26.50	33.50	40.50	48.00	55.50	62.00	64.00	65.50

POSITIONING—TACTICAL WEIGHTS



POSITIONING—ACTUAL WEIGHTS

	Target Funds											
	2060	2055	2050	2045	2040	2035	2030	2025	2020	2015	2010	2005
Total Equity	89.49%	87.08%	83.08%	78.18%	73.03%	66.10%	59.26%	51.75%	44.26%	38.05%	35.91%	34.42%
Total Fixed Income	10.20	12.66	16.58	21.53	26.52	33.44	40.40	47.98	55.48	61.83	63.82	65.34
Total Money Market	0.31	0.25	0.34	0.30	0.45	0.46	0.34	0.28	0.26	0.12	0.27	0.24
U.S. EQUITY												
Large-Cap Growth												
Growth Stock Fund—I Class	19.53	19.04	18.14	17.12	15.44	12.74	10.23	7.30	4.38	2.49	0.00	0.00
Large-Cap Core												
Equity Index 500—I Class	6.75	6.54	6.23	5.86	6.79	8.30	9.87	11.74	13.74	14.37	18.22	17.44
Large-Cap Value												
Value Fund	18.85	18.32	17.46	16.40	14.69	12.25	9.74	6.97	4.09	2.34	0.00	0.00
Mid-Cap Growth												
Mid-Cap Growth Fund—I Class	4.11	4.05	3.85	3.64	3.38	3.06	2.72	2.35	2.05	1.74	1.61	1.54
Mid-Cap Value												
Mid-Cap Value Fund—I Class	3.71	3.57	3.44	3.21	3.00	2.76	2.47	2.17	1.82	1.52	1.42	1.37
Small-Cap Growth												
New Horizons Fund—I Class	2.71	2.66	2.52	2.39	2.22	1.99	1.80	1.55	1.37	1.17	1.11	1.06
Small-Cap Core												
Small-Cap Stock Fund—I Class	2.48	2.45	2.30	2.18	2.03	1.83	1.66	1.44	1.25	1.07	1.01	0.97
Small-Cap Value												
Small-Cap Value Fund—I Class	2.28	2.22	2.11	1.97	1.84	1.67	1.51	1.34	1.15	1.00	0.93	0.89
Total U.S. Equity	60.43	58.84	56.05	52.77	49.38	44.59	39.99	34.87	29.86	25.71	24.30	23.27
INTERNATIONAL EQUITY												
Developed Growth												
International Stock Fund—I Class	7.71	7.44	7.17	6.71	6.18	5.68	5.10	4.50	3.75	3.22	3.01	2.88
Developed Core												
Overseas Stock Fund—I Class	7.84	7.62	7.26	6.82	6.39	5.79	5.18	4.52	3.86	3.28	3.11	2.97
Developed Value												
International Value Equity Fund—I Class	6.74	6.55	6.28	5.89	5.52	4.98	4.45	3.89	3.33	2.83	2.68	2.59
Emerging Markets												
Emerging Markets Stock Fund—I Class	4.81	4.72	4.51	4.28	3.97	3.61	3.26	2.84	2.50	2.19	2.05	1.98
Total International Equity	27.11	26.34	25.22	23.70	22.06	20.05	17.98	15.74	13.43	11.52	10.85	10.42
REAL ASSETS EQUITY												
Real Assets Equity												
Real Assets Fund—I Class	1.95	1.90	1.81	1.70	1.59	1.45	1.29	1.13	0.97	0.82	0.77	0.73

POSITIONING—ACTUAL WEIGHTS

	Target Funds											
	2060	2055	2050	2045	2040	2035	2030	2025	2020	2015	2010	2005
Total Equity	89.49%	87.08%	83.08%	78.18%	73.03%	66.10%	59.26%	51.75%	44.26%	38.05%	35.91%	34.42%
Total Fixed Income	10.20	12.66	16.58	21.53	26.52	33.44	40.40	47.98	55.48	61.83	63.82	65.34
Total Money Market	0.31	0.25	0.34	0.30	0.45	0.46	0.34	0.28	0.26	0.12	0.27	0.24
FIXED INCOME												
Core												
New Income Fund—I Class	4.44	5.50	7.23	9.38	11.55	12.56	13.04	13.96	15.96	18.60	19.49	20.18
International Bond Fund (USD Hedged)—I Class	1.50	1.87	2.45	3.18	3.92	4.26	4.41	4.72	5.39	6.18	6.41	6.60
Dynamic Global Bond Fund—I Class	0.99	1.26	1.62	2.07	2.60	2.86	2.94	3.14	3.55	4.04	4.22	4.34
High Yield												
High Yield Fund—I Class	0.44	0.60	0.95	1.47	2.05	2.31	2.42	2.62	3.10	3.79	4.01	4.18
Floating Rate Fund—I Class	0.12	0.16	0.25	0.41	0.57	0.64	0.69	0.73	0.87	1.05	1.12	1.19
Emerging Markets												
Emerging Markets Bond Fund—I Class	0.61	0.86	1.32	2.03	2.78	3.09	3.26	3.52	4.23	5.20	5.56	5.81
Long Treasuries												
U.S. Treasury Long Term Fund—I Class	2.11	2.41	2.78	2.97	3.05	3.13	3.15	3.21	3.42	3.54	3.57	3.61
Inflation Focused												
Limited Duration Inflation Focused Bond Fund—I Class	0.00	0.00	0.00	0.00	0.00	4.60	10.49	16.07	18.95	19.42	19.44	19.44
Total Fixed Income	10.20	12.66	16.58	21.53	26.52	33.44	40.40	47.98	55.48	61.83	63.82	65.34
MONEY MARKET												
Money Market												
U.S. Treasury Money Fund	0.31	0.25	0.34	0.30	0.45	0.46	0.34	0.28	0.26	0.12	0.27	0.24

UNDERLYING PERFORMANCE

	Expense Ratio	Prospectus Date	Annualized						Inception Date
			Three Months	One Year	Three Years	Five Years	Ten Years	Since Inception	
U.S. Equity									
Russell 3000 Index			4.10%	8.98%	14.02%	10.19%	14.67%	11.81%	
Growth Stock Fund-I Class ²	0.52%	5/1/2019	3.83	8.45	19.91	13.76	16.66	11.04	4/11/1950
S&P 500 Index			4.30	10.42	14.19	10.71	14.70	11.24	
Russell 1000 Growth Index			4.64	11.56	18.07	13.39	16.28	-	
Equity Index 500 Fund-I Class ²	0.06	5/1/2019	4.30	10.36	14.11	10.58	14.47	9.67	3/30/1990
S&P 500 Index			4.30	10.42	14.19	10.71	14.70	9.96	
Value Fund-I Class ²	0.63	5/1/2019	4.71	9.10	11.42	7.62	13.88	10.85	9/30/1994
Russell 1000 Value Index			3.84	8.46	10.19	7.46	13.19	9.73	
Mid-Cap Growth Fund-I Class ²	0.62	5/1/2019	6.96	16.06	16.90	12.99	17.04	13.85	6/30/1992
S&P MidCap 400 Index			3.05	1.36	10.90	8.02	14.64	11.86	
Russell MidCap Growth Index			5.40	13.94	16.49	11.10	16.02	10.47	
Mid-Cap Value Fund-I Class ²	0.65	5/1/2019	1.26	-2.81	7.96	6.37	12.85	10.99	6/28/1996
S&P MidCap 400 Index			3.05	1.36	10.90	8.02	14.64	11.12	
Russell MidCap Value Index			3.19	3.68	8.95	6.72	14.56	10.43	
New Horizons Fund-I Class ²	0.65	5/1/2019	8.06	18.16	24.18	15.78	20.85	11.90	6/3/1960
Russell 2000 Growth Index			2.75	-0.49	14.69	8.63	14.41	-	
Small-Cap Stock Fund-I Class ²	0.75	5/1/2019	5.71	10.78	16.61	10.39	16.60	13.04	6/1/1956
Russell 2000 Index			2.10	-3.31	12.30	7.06	13.45	-	
Small-Cap Value Fund-I Class ²	0.73	5/1/2019	4.54	0.12	12.52	7.37	13.35	11.48	6/30/1988
Russell 2000 Value Index			1.38	-6.24	9.81	5.39	12.40	10.22	
International Equity									
MSCI All Country World Index ex USA			3.22	1.80	9.91	2.65	7.03	5.99	
International Stock Fund-I Class ²	0.66	3/1/2019	3.31	2.80	9.99	4.27	8.35	8.89	5/9/1980
MSCI All Country World Index ex USA Net			3.22	1.80	9.91	2.65	7.03	-	
MSCI EAFE Growth Index Net			5.73	4.24	9.68	4.39	8.23	-	
Overseas Stock Fund-I Class ²	0.66	3/1/2019	2.06	-2.92	8.76	2.31	7.48	2.58	12/29/2006
MSCI EAFE Index Net			3.68	1.08	9.11	2.25	6.90	2.27	
International Value Equity Fund-I Class ²	0.66	3/1/2019	2.06	-4.11	4.55	-0.75	5.80	4.58	12/21/1998
MSCI EAFE Index Net			3.68	1.08	9.11	2.25	6.90	-	
MSCI EAFE Value Index Net			1.54	-2.10	8.46	0.05	5.50	-	
Emerging Markets Stock Fund-I Class ²	1.07	3/1/2019	1.76	3.60	12.26	5.51	7.37	7.78	3/31/1995
MSCI Emerging Markets Index Net			0.61	1.21	10.66	2.49	5.81	-	
Real Assets Equity									
Real Assets Fund-I Class ²	0.66	5/1/2019	1.23	1.56	4.50	0.71	-	3.54	7/28/2010
MSCI All Country World Index			3.80	6.32	12.22	6.74	-	9.64	
Real Assets Combined Index Portfolio			2.07	3.67	8.50	3.17	-	4.76	

Performance data quoted represents past performance and is not a reliable indicator of future performance. Investment return and principal value will fluctuate so that an investor's shares, when redeemed, may be worth more or less than their original cost. Current performance may be lower or higher than the performance data quoted. To obtain the most recent month-end performance, visit troweprice.com. Consider the investment objectives, risks, and charges and expenses carefully before investing. For a prospectus or, if available, a summary prospectus containing this and other information, call 1-800-638-7780 or visit troweprice.com. Read it carefully.

The fund's total return figures reflect the reinvestment of dividends and capital gains, if any.

² The T. Rowe Price Fund shares the portfolio of an existing fund (the original share class of the fund referred to as the "investor class"). The total return figures for the I Class shares have been calculated using the performance data of the investor class up to the inception date of all of the I Class funds (8/28/2015) and the actual performance results of the I Class since those dates. Because the I Classes are expected to have lower expenses than the Investor Classes, the I Class performance, had it existed over the periods shown, would have been higher.

UNDERLYING PERFORMANCE

	Expense Ratio	Expense Ratio Prospectus Date	Three Months	One Year	Annualized				Inception Date
					Three Years	Five Years	Ten Years	Since Inception	
Fixed Income									
Bloomberg Barclays U.S. Aggregate Bond Index			3.08%	7.87%	2.31%	2.95%	3.90%	7.33%	
New Income Fund—I Class ²	0.42%	10/1/2018	3.16	7.96	2.56	2.89	4.14	6.94	8/31/1973
Bloomberg Barclays U.S. Aggregate Bond Index			3.08	7.87	2.31	2.95	3.90	—	
International Bond Fund (USD Hedged)—I Class ²	0.53	5/1/2019	2.99	8.55	—	—	—	5.44	9/12/2017
Bloomberg Barclays Global Aggregate ex-USD Bond (USD Hedged) Index			3.42	4.10	—	—	—	1.40	
Dynamic Global Bond Fund—I Class ²	0.52	5/1/2019	1.31	1.68	0.55	—	—	1.36	1/22/2015
3 Month Libor in USD Index			0.63	2.58	1.79	—	—	1.51	
High Yield Fund—I Class ²	0.61	10/1/2018	3.15	7.72	7.10	4.20	8.65	8.12	12/31/1984
Credit Suisse High Yield Index			2.55	7.12	7.55	4.55	9.06	—	
Floating Rate Fund—I Class ²	0.65	10/1/2018	1.74	4.19	4.41	3.45	—	3.81	7/29/2011
S&P/LSTA Performing Loan Index			1.71	4.01	5.41	4.04	—	4.59	
Emerging Markets Bond Fund—I Class ²	0.78	5/1/2019	3.37	10.22	4.88	4.23	7.18	9.93	12/30/1994
J.P. Morgan Emerging Markets Bond Global Index			3.76	11.32	4.65	4.47	7.41	10.05	
U.S. Treasury Long-Term Fund—I Class ²	0.33	10/1/2018	5.73	12.06	1.07	5.15	5.96	7.09	9/29/1989
Bloomberg Barclays U.S. Long Index			6.03	12.30	1.34	5.71	6.53	7.83	
Limited Duration Inflation Focused Bond Fund—I Class ²	0.35	10/1/2018	2.10	3.84	1.63	0.86	1.40	2.05	9/29/2006
Bloomberg Barclays U.S. 1-5 Year Treasury TIPS Index			1.82	3.41	1.60	0.91	0.82	1.26	
Money Market									
U.S. Treasury Money Fund—I Class ²	0.36	10/1/2018	5.73	12.06	1.07	5.15	5.96	7.09	9/29/1989
FTSE 3 Month Treasury Bill			0.61	2.30	1.36	0.84	0.46	—	

Performance data quoted represents past performance and is not a reliable indicator of future performance. Investment return and principal value will fluctuate so that an investor's shares, when redeemed, may be worth more or less than their original cost. Current performance may be lower or higher than the performance data quoted. To obtain the most recent month-end performance, visit troweprice.com. Consider the investment objectives, risks, and charges and expenses carefully before investing. For a prospectus or, if available, a summary prospectus containing this and other information, call 1-800-638-7780 or visit troweprice.com. Read it carefully. The fund's total return figures reflect the reinvestment of dividends and capital gains, if any.

² The T. Rowe Price Fund shares the portfolio of an existing fund (the original share class of the fund referred to as the "investor class"). The total return figures for the I Class shares have been calculated using the performance data of the investor class up to the inception date of all of the I Class funds (8/28/2015) with the exception of the Limited Duration Inflation Focused Bond Fund—I Class (9/29/2015), the Floating Rate Fund—I Class (11/29/2016), and the U.S. Treasury Long-Term Fund—I Class (5/3/2017), and the actual performance results of the I Class since those dates. Because the I Classes are expected to have lower expenses than the Investor Classes, the I Class performance, had it existed over the periods shown, would have been higher.

TARGET FUNDS BENCHMARK ALLOCATIONS

	Russell 3000 Index	MSCI All Country World Index ex USA	Bloomberg Barclays U.S. Aggregate Bond Index	Bloomberg Barclays U.S. Treasury Inflation-Protected Securities (TIPS) 1-5 Years Index
Target 2060 Combined Index Portfolio	63.00%	27.00%	10.00%	0.00%
Target 2055 Combined Index Portfolio	61.25	26.25	12.50	0.00
Target 2050 Combined Index Portfolio	58.45	25.05	16.50	0.00
Target 2045 Combined Index Portfolio	54.95	23.55	21.50	0.00
Target 2040 Combined Index Portfolio	51.45	22.05	26.50	0.00
Target 2035 Combined Index Portfolio	46.55	19.95	28.50	5.00
Target 2030 Combined Index Portfolio	41.65	17.85	29.50	11.00
Target 2025 Combined Index Portfolio	36.40	15.60	31.50	16.50
Target 2020 Combined Index Portfolio	31.15	13.35	36.00	19.50
Target 2015 Combined Index Portfolio	26.60	11.40	42.00	20.00
Target 2010 Combined Index Portfolio	25.20	10.80	44.00	20.00
Target 2005 Combined Index Portfolio	24.15	10.35	45.50	20.00

Each index is weighted at the appropriate strategic neutral allocation of its respective asset class, which is predetermined and changes over time.

SERIES INFORMATION

	Symbol	12B-1 Fee	Fiscal Year End
Target 2060 Fund	TRTFX	–	May 31
Target 2055 Fund	TRFFX	–	May 31
Target 2050 Fund	TRFOX	–	May 31
Target 2045 Fund	RPTFX	–	May 31
Target 2040 Fund	TRHRX	–	May 31
Target 2035 Fund	RPGRX	–	May 31
Target 2030 Fund	TRRWX	–	May 31
Target 2025 Fund	TRRVX	–	May 31
Target 2020 Fund	TRRUX	–	May 31
Target 2015 Fund	TRRTX	–	May 31
Target 2010 Fund	TRROX	–	May 31
Target 2005 Fund	TRARX	–	May 31

FUND MANAGEMENT

The Funds are managed by Jerome Clark and Wyatt Lee. Jerome and Wyatt are both members of the firm's Asset Allocation Committee.

The portfolio manager is responsible for the day-to-day management of the Fund including portfolio positioning, performance, and risk-management oversight. The Fund's asset allocation decisions are made by the firm's Asset Allocation Committee. The Committee is chaired by the head of Asset Allocation, and includes some of the firm's most senior investment management professionals across major asset classes.

Individual security selection is made by portfolio managers of the Fund's component strategies drawing on the fundamental insights of T. Rowe Price's team of around 200 global research analysts.

ADDITIONAL DISCLOSURES

You could lose money by investing in the U.S. Treasury Money Fund. Although the Fund seeks to preserve the value of your investment at 1.00 USD per share, it cannot guarantee it will do so. An investment in the Fund is not insured or guaranteed by the Federal Deposit Insurance Corporation or any other government agency. The Fund's sponsor has no legal obligation to provide financial support to the Fund, and you should not expect that the sponsor will provide financial support to the Fund at any time.

Source for MSCI data: MSCI. MSCI makes no express or implied warranties or representations and shall have no liability whatsoever with respect to any MSCI data contained herein. The MSCI data may not be further redistributed or used as a basis for other indices or any securities or financial products. This report is not approved, reviewed or produced by MSCI.

For any equity benchmarks shown, returns are shown with gross dividends reinvested, unless otherwise noted.

Russell Investment Group is the source and owner of the trademarks, service marks and copyrights related to the Russell indexes. Russell® is a trademark of Russell Investment Group.

Source for Bloomberg Barclays data: Bloomberg Barclays Global Family of Indices. Copyright 2019, Bloomberg Barclays Risk Analytics and Index Solutions Limited. Used with permission.

Standard & Poor's®, "S&P®", "S&P 500®", "Standard & Poor's 500", and "500" are trademarks of Standard & Poor's, and have been licensed for use by T. Rowe Price. The Trust is not sponsored, endorsed, sold or promoted by Standard & Poor's and Standard & Poor's makes no representation regarding the advisability of investing in the Trust.

Diversification exhibits may not add to 100% due to exclusion or inclusion of cash.

The manager's views and portfolio holdings are historical and subject to change. This material should not be deemed a recommendation to buy or sell any of the securities mentioned. The specific securities identified and described do not represent all of the securities purchased, sold, or recommended for the Trust and no assumptions should be made that the securities identified and discussed were or will be profitable.

Certain numbers in this report may not equal stated totals due to rounding. Unless otherwise stated, data is as of the report date.

Unless indicated otherwise the source of all data is T. Rowe Price.

This material has been prepared for informational purposes only. The views and opinions stated in this commentary are those of the portfolio managers listed as of the date indicated. These views and opinions are subject to change based on market or other conditions and may differ from those of other T. Rowe Price associates. Actual market and investment results may differ materially from expectations.

© 2019 T. Rowe Price. All rights reserved. T. ROWE PRICE, INVEST WITH CONFIDENCE, and the Bighorn Sheep design are, collectively and/or apart, trademarks of T. Rowe Price Group, Inc.

T. Rowe Price Investment Services, Inc., Distributor.